

# zogics organics

## HONEY COCONUT



## SOLERA DISPENSERS

Inspired by the warm tones of honey coconut, its sleek design integrates seamlessly into modern facility decor. The refillable dispenser system is designed to enhance organization and reduce waste, making it an eco-conscious choice for high-traffic settings.



**TAMPER-PROOF  
LOCKING KEY**



**LASTING INVESTMENT  
THAT SAVES MONEY**



**REDUCE  
LANDFILL WASTE**



**CUSTOM ZOGICS  
ORGANICS HONEY  
COCONUT LABELS**

| DISPENSER   | SKU #                 | PRODUCT DETAILS   |
|---|-----------------------|---|
|    | <b>39334-R3-C-HNC</b> | Satin Rectangle 3-Chamber Refillable Dispenser<br>(Shampoo, Conditioner, and Body Wash) |
|    | <b>39388-R3-C-HNC</b> | Black Rectangle 3-Chamber Refillable Dispenser<br>(Shampoo, Conditioner, and Body Wash) |
|   | <b>39334-O3-C-HNC</b> | Satin Oval 3-Chamber Refillable Dispenser<br>(Shampoo, Conditioner, and Body Wash)      |
|  | <b>39388-O3-C-HNC</b> | Black Oval 3-Chamber Refillable Dispenser<br>(Shampoo, Conditioner, and Body Wash)      |
|  | <b>39234-R3-C-HNC</b> | Satin Rectangle 2-Chamber Refillable Dispenser<br>(Shampoo and Conditioner)             |
|  | <b>39288-R3-C-HNC</b> | Black Rectangle 2-Chamber Refillable Dispenser<br>(Shampoo and Conditioner)             |

| DISPENSER | SKU # | PRODUCT DETAILS |
|-----------|-------|-----------------|
|-----------|-------|-----------------|



**39234-03-C-HNC**

Satin Oval 2-Chamber Refillable Dispenser  
(Shampoo and Conditioner)



**39288-03-C-HNC**

Black Oval 2-Chamber Refillable Dispenser  
(Shampoo and Conditioner)

## COLOR OPTIONS



Satin Finish



Black

## BOTTLE SHAPE OPTIONS

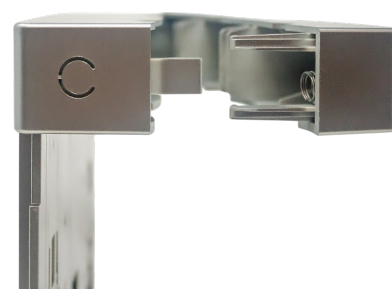
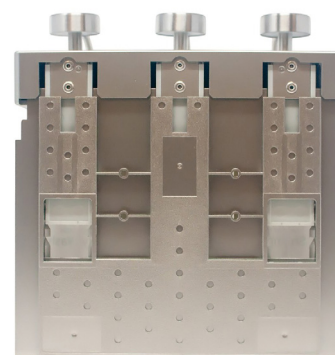


Rectangular



Oval

## ABS BRACKETS + LOCKING FEATURE



## SPECIFICATIONS

|                   |   |
|-------------------|---|
| <b>WEIGHT</b>     | 2 lbs (3-Chamber), 1.5 lbs (2-Chamber)                              |
| <b>DIMENSIONS</b> | 6" d x 12" w x 12" h (3-Chamber)<br>6" d x 8" w x 12" h (2-Chamber) |
| <b>CAPACITY</b>   | 12 oz each chamber  |
| <b>COLOR</b>      | Satin finish or black   |

## FEATURES

- Designed for commercial settings, including gyms, hotels, and spas
- Durable stainless steel pumps for reliable operation
- Lightweight, robust ABS plastic body
- Lockable, tamper-proof gate for secure refills
- Refillable chambers reduce single-use plastic waste
- Detachable chambers for easy maintenance
- Simple installation with included adhesive and two-way tape



Questions? We love to help!

[zogics.com](http://zogics.com) • [hello@zogics.com](mailto:hello@zogics.com) • 888.623.0088